

DISCONNECT & TEST TERMINAL BLOCKS

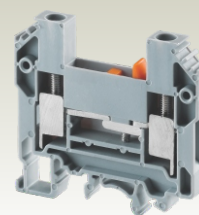
These blocks are used for measuring, control and regulatory circuits. They provide a clear functional advantage for devices having utility instruments and associated transformers.

In CDTTU & CDTTUSH disconnection is achieved by means of a slide link operated with a screw driver.

Specially designed socket headed screws act as test monitoring points in Disconnecting & Test Terminal Blocks.

CDTTUFT is a standard feed through terminal with the same profile as that of CDTTU.

CDTTU



Width (Thickness) x Length

8 x 63 mm

Height with DIN 35 x 7.5 / 35 x 15 / 32 mm Rail

58.7 mm / 65.7 mm / 63.7 mm

Connection Possibility as per

With 1 Conductor per clamp	Stranded / Flexible
	Solid
With 2 same size Conductors per clamp	with Ferrule / Lug
	Stranded / Flexible with TWIN Ferrule / Lug

IEC	UL - CSA
1.5 - 10.0 mm ²	16 - 8 AWG
1.5 - 10.0 mm ²	16 - 8 AWG
1.5 - 10.0 mm ²	16 - 8 AWG
1.5 - 4.0 mm ²	16 - 10 AWG
1.5 - 4.0 mm ²	16 - 10 AWG

Wire Stripping Length

12 mm

Ratings As Per

IEC60947-7-1 UL-1059 CSA22.2-158

Voltage

800 V 600 V 600 V

Current

57 A 41 A 41 A

Torque

1.2 Nm 14 lb-in 14 lb-in

Approvals



Insulation Material / Comparative Tracking Index

Polyamide 66 / 1

Rated Impulse Voltage / Pollution Degree

8 KV / 3

Terminal Block

Type / Cat. No. **Standard Pack**

CDTTU 50

End Plate



EPCDTTU 50

Mounting Rail (Refer Pg. 184 for details)



CA701 50 m

CA701-15 50 m

CA501 50 m

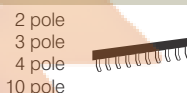
End Clamp (Refer Pg. 185 for details)



CA702 50

CA802 50

Insulated External Shorting Links



CA710/2 I_{max.}: 41 A 100

CA710/3 41 A 50

CA710/4 41 A 50

CA710/10 41 A 20

Shorting Plug



QJ8/2 25

Marking Tags (Refer Pg. 187 for details)



CA509/K8 100

Screw Driver



SCS1.0/5.5 Blade size: 1.0 x 5.5 mm 10

rujutaent.com